



2005-2007 REPORT TO CONTRIBUTORS



Evans
School
of Public Affairs

UNIVERSITY OF
WASHINGTON



“THE LEADERS OF TOMORROW
WILL BE THOSE WHO HAVE THE
VISION TO SEE TOMORROW,
THE INTELLIGENCE TO PLAN
WISELY, AND THE CIVILITY
TO LISTEN TO OTHERS.”

DANIEL J. EVANS
Former Governor of the
State of Washington
and U.S. Senator

THE ROAD AHEAD

I have had the privilege of serving as Dean of the Evans School of Public Affairs for the last five years, and throughout that time I have worked together with faculty and staff to make the Evans School the number one public school of public policy and management in America, increasing both the quality and accessibility of our programs and enhancing our impact. With the help of generous donors like you, we inch closer to that objective every day.

The Evans School has grown tremendously during this period. We have added 13 faculty members and doubled the size of our student body. We launched a Ph.D. program and a stand-alone Executive MPA program, while doubling our endowment. This continued expansion reflects the strength of our school and points to the relevance of and increasing demand for capable public service leaders.

Similarly, we have maintained an unwavering dedication to quality in our curriculum, research, and community outreach. I am pleased to share that the Evans School was ranked third in the entire country for faculty scholarly productivity in public policy—behind Harvard and Duke—in *The Chronicle of Higher Education* last November. Undoubtedly, this ranking reinforces our capacity to compete at the national level.

As our size, reputation, and quality continue to rise, our commitment to access for students becomes evermore important. Financial access is increasingly critical, and we continue to build new fellowships to support students so they can graduate and focus on becoming transformative civic leaders rather than on repaying student loans with public and nonprofit sector salaries.

In order to solidify our leadership position, program quality, and accessibility over the next five years, we must:

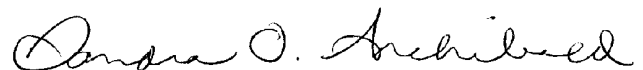
- **Infuse the values and legacy** of our namesake more deeply into all of our research, teaching, and outreach through an expansion of the Daniel J. Evans Endowment for Excellence in Public Service.

- **Enhance our ability to attract, retain, and reward the nation's best faculty** through eight new endowed professorships for senior faculty and increased research funding for younger faculty members.
- **Attract the very best students** from our state and across the world through 20 new endowed fellowships. We must make careers in the public interest accessible to all students, especially those who may not be able to afford tuition or who feel pushed into the private sector because of student loan debt upon graduation.

These ambitious plans require an endowment worthy of our namesake and comparable to our peer institutions. I intend to more than double our endowment of \$18 million (market value) to \$40 million by 2012.

The Evans School's proud tradition of private support—from alumni and staff, faculty and friends—ranks among the highest participation rates at the University of Washington. After five years, we can choose to rest on our laurels or we can choose to capitalize on our momentum and accelerate the pace of our progress. Please join me in this journey to redefine excellence and leadership in the public interest.

With gratitude,



Sandra O. Archibald
Dean and Professor



TEACHING

Advancing Public Affairs Education

Excellence in teaching has been a defining characteristic of the Evans School since its inception. Our degree programs continue to grow in terms of both quality and size. Our students learn from professors and lecturers of international prominence with expertise across a range of policy and management disciplines. This work would not be possible without the generous financial support of our donors and friends, as less than 18% of the Evans School's resources come from state funds.

Expanding Education for Service in the Public Interest

Expanding the number of leaders prepared for careers in the public interest has never been more critical, with the unprecedented expansion of the nonprofit sector and as many as 64% of Washington state employees set to retire by 2015. The Evans School's degree programs continue to attract the best and brightest candidates from across the U.S. and the world. Our Master of Public Administration (MPA) program has grown to accept nearly 150 students per year, doubling in size over the last decade, while maintaining the high standards of our competitive and selective admissions process.

New Ph.D. Program in Public Policy and Management

Autumn 2006 marked the beginning of our new Ph.D. program. Our ten Ph.D. students leverage an interdisciplinary curriculum in both public policy analysis and management in preparation for careers in academia and research positions in the public and nonprofit sectors.

Executive Program Gains Recognition

The first and only program of its kind in the Northwest, our Executive MPA provides an executive-level perspective on public and nonprofit sector management, emphasizing strategic leadership skills needed for innovative approaches to policy challenges. Now in its fifth year, the Executive MPA degree received formal approval as a stand-alone degree in 2007 from both the University of Washington Board of Regents and the Washington state Higher Education Coordinating Board, which recognized the program's importance in a field "with substantial need and broad community impact."

Peer Review and Accreditation

The Evans School successfully completed a rigorous and voluntary process of peer review and accreditation in 2005. Conducted by faculty and administrators from public affairs and administration programs across the country, this review certifies the Evans School meets exacting standards tailored for master's degree programs in public affairs, policy, and administration.

Afghan Civil Officials Study at the Evans School

Fifteen government and nonprofit officials from Afghanistan joined the Evans School community in 2008 to pursue advanced studies as part of their Master of Public Policy and Administration (MPPA) program at Kabul University. These officials, who work for organizations including the Afghan Ministries of Justice, Finance, and the Interior; Afghan National Assembly; and the United Nations, leverage the Evans School's strengths in program development and evaluation, public/private/nonprofit partnerships, strategic management, and public policy. This program is hosted in partnership with the Afghan eQuality Alliances Program, sponsored by the U.S. Agency for International Development (USAID) through a cooperative agreement with Washington State University.

New Partnership Brings Korean Officials to Parrington Hall

The Evans School welcomed its first class of eight Korean government officials as part of a landmark new cooperative program between the Evans School, Henry M. Jackson School of International Studies, and the Human Resource Development Bureau of the Civil Service Commission of Korea. These officials, who lead major agencies in the Korean government, are pursuing either a two-year Master of Public Administration (MPA) degree or a one-year professional development fellowship.

2006-2007 DONORS

Following is a list of individuals and organizations that have made gifts to the Daniel J. Evans School of Public Affairs from July 1, 2006 to June 30, 2007. A list of those who made gifts from July 1, 2005 to June 30, 2006 begins on page 9. This list does not include pledges, grants, and contracts to the school and its research centers. We have made every effort to list all donors accurately. Please advise us of any errors.

ORGANIZATIONS

\$1,000,000 or more

Aven Foundation
Northwest Area Foundation

\$100,000-\$999,999

Anonymous Gifts
Bill & Melinda Gates Foundation
Eli and Edythe L. Broad Foundation
Institute of International Education

John D. & Catherine T. MacArthur Foundation
Lumina Foundation for Education
Nordstrom Inc.
Robert Wood Johnson Foundation
The Annie E. Casey Foundation
The Boeing Company
The Joyce Foundation
Walton Family Foundation, Inc.
Weyerhaeuser Company Foundation
WSU Foundation

\$10,000-\$99,999

Achelis Foundation
Anonymous Gift
Cummins Engine Foundation
International Research & Exchange Board
National Alliance for Public Charter Schools
Puget Sound Energy
Scottish Rite Scholarship Foundation of Washington
Spencer Foundation

The Henry M. Jackson Foundation
United Way of King County
Urban Institute
Vanguard Charitable Endowment Program
VillageReach
Walla Walla Watershed Alliance

\$1,000-\$9,999

Amgen Corporation
Association of Washington Business
Association of Washington Cities

Recruiting a Growing Team of Distinguished Faculty

With thirteen new faculty appointments over the past four years, the Evans School's increased capacity in teaching and research spans the boundaries between complex policy and management challenges. Recent additions to our faculty include:

- **Ann Bostrom**, Ph.D., Carnegie Mellon University
- **Michael Blake**, Ph.D., Stanford University
- **Joseph H. Cook**, Ph.D., University of North Carolina, Chapel Hill
- **Sara Curran**, Ph.D., University of North Carolina, Chapel Hill
- **Maria Damon**, Ph.D., University of California, San Diego
- **Laura Evans**, Ph.D., University of Michigan
- **Crystal Hall**, Ph.D., Princeton University
- **Sanjeev Khagram**, Ph.D., Stanford University
- **Joaquín Herranz, Jr.**, Ph.D., Massachusetts Institute of Technology
- **Andrew Light**, Ph.D., University of California, Riverside
- **Mark Long**, Ph.D., University of Michigan
- **Anne Steinemann**, Ph.D., Stanford University
- **Craig Thomas**, Ph.D., University of California, Berkeley

Student Focus:

DANTÉ TAYLOR

At the Evans School, Danté Taylor discovered a passion for community and economic development, and plans a career of service to local communities. "I come from a community that is in dire need of change," said Taylor. "Things haven't changed for years. The community hasn't been taught how to challenge city government."

Taylor had the opportunity for hands-on experience in community development through the new City of Seattle Municipal Government Fellows program. Working for the Office of Policy and Management, Taylor helped develop community groups like business owners' associations and developed a method for measuring the progress of City-promised community and economic development. "I designed measurement systems that would be applicable for numerous city departments," said Taylor. "I was able to see how each department plays a role in what happens in local communities."

According to Taylor, graduate studies would not have been possible without fellowship support from donors to the Daniel J. Evans Endowment for Excellence in Public Service.

"THE FELLOWSHIP MAKES A HUGE DIFFERENCE. IT MEANS THAT I CAN FOCUS ON SCHOOL, RATHER THAN WORK, WHICH WAS ESPECIALLY IMPORTANT MY FIRST YEAR HERE."

Microsoft Corporation
Squaxin Island Tribe
Washington State Association
of Counties
Washington City/County
Management Association
Washington First International Bank
Washington State Dairy Federation
Weyerhaeuser Company
WFSE Olympia Headquarters
Women's Funding Alliance

\$500-\$999

Anonymous Gift
IBM Corporation
Russell Investments
State Farm Companies Foundation
The Seattle Foundation

Washington Association of
Wheat Growers
Washington State Potato Commission

\$1-\$499

Alexander Family Living Trust
Community Foundation of Greater
Chattanooga
Greenwood Publishing Group
Jamestown S'Klallam Tribe
Kumarian Press, Inc.
Merck Company Foundation
N.W. Forest Resources Mgmt.
Riley & Nancy Pleas Family
Foundation
The Freddie Mac Foundation
Washington Cattlemen's Association
Washington Cattle Feeders
Association

INDIVIDUALS

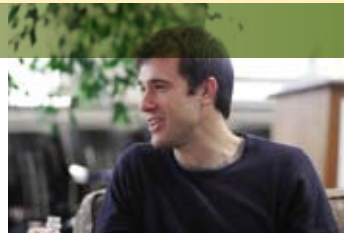
\$1,000,000 or more
Anonymous Gift

\$10,000-\$99,999
Anonymous Gifts
Janet M. and John W. Creighton
Paul B. and Anne S. Demitriades
Daniel J. and Nancy Evans
William H. and Melinda Gates
Harry A. and Ann L. Pryde
William D. and Jill S. Ruckelshaus

\$1,000-\$9,999
Glenn Bell
Phyllis J. and William Campbell
Elaine Chang and Jonathan Brock

Brewster C. and Patricia S. Denny
Lynn T. Elmore and John J. Boehrer
Nancy Folger
Gregg Gottesman
Joanne R. and Bruce A. Harrell
Dennis L. and Charlotte Hayes
John K. and Carol J. Hoerster
John R. and Rosalind Kephart
Frederick C. and Marianne M. Kiga
Joe and Sherry King
Kevin A. McCall and
Vickery J. Prongay
Diane L. and Robert H. McDaniel
Robert L. and Linda E. Parlette
Robert D. Plotnick and Gay L. Jensen
Nancy F. and Benjamin P. Remak
Constance W. and Norman B. Rice
Helen E. Sommers

RESEARCH



Breaking New Ground in Public Affairs

The Evans School continues to gain international recognition for expertise in a range of policy areas, strengthening our historic leadership in conventional policy and management specializations and emerging disciplines that cut across traditional boundaries. Our faculty's expertise includes:

- Nonprofit management
- Environmental policy and management
- Public management and finance
- Policy analysis
- Poverty studies
- International public affairs
- Leadership and decision-making
- Policy and management integration
- Collaborative governance

Faculty Top-Ranked for Scholarship

The Evans School was ranked third among all U.S. universities for faculty scholarly productivity in public policy in a November 2007 index reported in *The Chronicle of Higher Education*. The ranking examined a range of factors for faculty members, including books published, journal publications, citations of journal articles, grant dollars awarded, and honors and awards. Only Harvard University and Duke University outranked the UW Evans School in this study. The Evans School outranked several other nationally recognized programs, including University of California at Berkeley, University of Michigan at Ann Arbor, and Carnegie Mellon University.

Understanding Levers to Reduce Poverty for Individuals and Communities

What are key ways to reduce poverty in communities? With funding from the Northwest Area Foundation, researchers from the Evans School are working to understand what policies are most effective in communities that vary by urban-rural location, in terms of racial and ethnic diversity, and with regard potential economic linkages with surrounding areas. The five-year, \$1.5 million Community Vitality Project will produce research papers that analyze the levers that both reduce poverty and enhance community vitality, with the goal of making recommendations for effective policies within the eight states that the Northwest Area Foundation serves: Washington, Oregon, Idaho, Montana, North Dakota, South Dakota, Minnesota, and Iowa.

New Consortium Explores Public, Private, and Nonprofit Collaboration

The Consortium on Collaborative Governance studies how public, nonprofit, and private sectors work together to solve public problems. Understanding these networks and partnerships is increasingly critical as governments around the world choose to deliver public services through contracts and agreements with private and nonprofit organizations. This groundbreaking joint initiative includes the Evans School, University of Arizona Eller College of Management School of Public Administration and Policy, and University of Southern California School of Policy, Planning and Development.

West Coast Poverty Center Addresses Effective Approaches to Poverty Reduction

A partnership of the UW's Evans School, School of Social Work, and the Departments of Economics, Sociology, and Geography, the West Coast Poverty Center is a hub for research, education, and policy analysis leading to greater understanding of the causes of poverty in the West Coast states. One of only three such centers funded by the U.S. Department of Health and Human Services, the center supports research and dissemination of knowledge about effective regional, state and local policies for addressing poverty and mentors of the next generation of poverty scholars and practitioners.

Breakthrough Knowledge Spans Boundaries and Borders

In communities across the nation, around the world, and in our own backyard, Evans School research is building knowledge, informing policy, and driving change. Increasingly complex networks of governments, nonprofits, and

2006-07 Donors continued

Jiu-Hwa L. Upshur
Colleen S. and George V.
Willoughby
Richard O. and Diane Zerbe

\$500-\$999

Virginia L. Anderson
Anonymous Gift
Karen S. and Dean S. Cooper
Paul W. and Diana Dennett
David J. Durban
Linda K. and Wayne K. Fox
Jay A. and Susan E. Fredericksen
Paul T. and Alice H. Hill
Jerome L. Hillis and Diana H. Gale
Linda Lake
James F. and Louise Lane

Catherine S. Lindenberg
James Y. and Julie B. Locke
Nancy J. and Neil L. McReynolds
Deborah Moore
Karen H. and Ralph Munro
Donald S. Norman
Jesse Palacios
Mollie V. and Louis H. Pepper
John J. and Marlowe Peterman
Steven R. and Margaret C. Smith
Carol H. and Robert C. Wall
Cynthia K. Zehnder
William M. and Terrea O. Zumeta

\$1-\$499

Warren M. Acunius
Crystal C. and Kenneth S. Alexander
Amanda J. Allen
April E. and Brian S. Allen

C. L. Anderson and David A. Hennes
Anonymous Gifts
Marlin J. Appelwick and Sharron P.
Sellers
Rosemary B. and Luis L. Aragon
Sandra O. Archibald and Chester O.
McCorkle
Sean R. Ardussi
Steven H. and Carol D. Arnold
Neil T. Asaba
Nancy M. and David Aukin
Gary J. Ausman
Catherine M. Babcock and Jeffrey
C. Beyer
Adela Y. Backiel and
William Banzhaf
John S. and Catherine S. Baker
Kathleen A. Balet
Connie A. Barndt

Karen C. Barrett
Leah H. and Daniel Barrett
David C. and Raneem M. Bassett
Svitlana Batsyukova
Miriam and Delone E. Bausch
William A. Beck
Matthew B. Benuska
Carol J. and Arthur H. Berg
Kim R. and Raphael A. Bernier
Kelly R. Bidlingmaier
Elizabeth J. Blue
Joan M. and Ronald J. Bodey
Joel M. and Marie Bolstad
Nora G. and Theodore Boretti
Marshall D. and Connie S. Boyd
Kathleen Bracy and Ann Gonzalez
Shannon Braddock
Marguerite M. and Alan Bradford
Mary E. Brant

RICHARD O. ZERBE

businesses deliver public services, and the Evans School is recognized as a leader in understanding and navigating this changing landscape of public service.

Working Papers Series Increases Access to Research

Research at the Evans School is interdisciplinary, innovative, and relevant to the major public policy and management challenges of the day. The Evans School Working Papers Series, available on our website, makes our faculty members' research broadly available to the research community, students, policymakers, and the public. Working papers are typically pre-publication versions of current research suitable for submission to high-level professional publications.

Evans School Research Centers Offer New Solutions

From human services to frameworks for making decisions, Evans School faculty and research centers explore some of the most pressing issues of our time. Our research and outreach centers include:

- Benefit-Cost Analysis Center
- Center for Urban Simulation
- Center on Reinventing Public Education
- Civic Engagement for the 21st Century
- Human Services Policy Center
- Marc Lindenberg Center for Humanitarian Action, International Development and Global Citizenship
- Nancy Bell Evans Center on Nonprofits and Philanthropy
- The Water Center
- West Coast Poverty Center
- William D. Ruckelshaus Center

Empowering Public Health Networks in Sub-Saharan Africa and South Asia

Housed in the Evans School's Marc Lindenberg Center and supported by the Gates Foundation, this project explores how to drive change in the public health systems of developing countries. These systems are loosely networked, multifaceted, and involve numerous public, nonprofit, and private health organizations. By creating a mapping database describing public health conditions, institutions, and networks of selected countries in Sub-Saharan Africa and South Asia, researchers create frameworks for measuring the impacts of advocacy efforts and developing successful public health networks in developing nations.

Can benefit-cost analysis be used to design and evaluate social programs? Evans School associate dean and professor Richard O. Zerbe established the Benefit-Cost Analysis Center as part of his quest to answer this question and to link researchers from across the country exploring this framework for making decisions. With financial support from the John D. and Catherine T. MacArthur Foundation, Zerbe's research is setting standards for the use of benefit-cost analysis and addresses how moral sentiments, charitable contributions, and issues of equity and fairness can be included in this framework.

Zerbe also organized two Benefit-Cost Analysis conferences over the past three years. In 2007, conference attendees created a professional Society for Benefit-Cost Analysis, and voted Zerbe vice president and president elect of the new organization. The author of over 100 published works, Zerbe is also the Daniel J. Evans Distinguished Professor at the Evans School.

Students and graduates alike have consistently found in Zerbe a source of inspiration, someone who, by word and by deed, challenges them to think in novel ways and to use their leadership to find cost-efficient, morally sustainable solutions to economic, legal, and environmental problems.

Professor Zerbe and his wife Diane are wonderful examples of faculty support at the Evans School. During Zerbe's 26-year tenure at the University of Washington, he and Diane have made numerous gifts to the University. Most recently, the Zerbés established the Richard O. Zerbe Endowed Fellowship to support outstanding graduate students studying benefit-cost analysis.



“WE ARE ATTRACTED BY THE PASSION OF THE EVANS SCHOOL STUDENTS AND THEIR CAPACITY TO MAKE IMPROVEMENTS IN OUR WORLD.”

John C. and Leslie K. Breitrer
Lauraine D. Brekke
James A. Bricker
Katie K. Briggs
Margo M. Buckels and Robert Miyashiro
John R. Burbank and Pamela MacEwan
Kristen G. and Keith Burnham
Aisha E. Burrell
Pete A. and Carole Butkus
Sarah B. Butler
Peter J. and Linda Bylsma
Lisa and Gregg Carrington
Nicole C. Caven
Kuei-Sheng and Ju-Fong L. Chang
Nancy Chang
Helen H. Cheung
Jonathon J. Christensen

Chee-Hong Brian and Stacy Chung
Lisa G. and Peter Clausen
Betsy A. Cody
Jerry B. and Marilyn A. Coffman
Linda W. and Melvin Collart
Richard W. Cook
Marilyn W. Cope
Judith B. Cox
Elizabeth M. and Daniel W. Crofts
Leslie A. Crowe
George E. and Elizabeth A. Davis
Patricia L. Davis
Peter DeBotton and Trina C. Hing
Karen T. and Steven M. Demorest
Corrine A. deVry
Dwight D. and Susan Dively
David A. Dorfman
Gail H. Douglas
Heather E. Dowey

Leslie K. Dozono
Robert J. Drewel
Kathryn L. Drummond
David V. Dukes
Lynn M. DuPaul
Marc J. Dupuis
James R. Eccles
Leta N. Edwards
Marc W. Elliott and Laurie D. Russell
John and Bonnie Ellsworth
Christene G. Endresen
Gayle A. Engel-Sparks and Rod Sparks
Leopoldo L. Espino
John B. Evermann
Timmie R. Faghin
John H. and Karen L. Faris
Phelps Feeley

Forrest L. and Ruth Fenstermaker
Sarah J. Fickeisen
Melissa K. Fisher
Elizabeth J. and E. M. Flynn
Judith A. Foley and William J. Talbott
Nancy L. Foote
John H. Forsyth
Christopher B. Foster
Patricia A. and Michael Foster
Elise D. Frisella
Michael E. and Margaret Fuson
Barbara Gagnat
Ana Maria Garzon
Michael J. Gedeon
Beth E. Goldberg
Steven M. and Joan Goldblatt
Dan D. and Cory L. Goldhaber
Robert M. Goldstein

COMMUNITY ENGAGEMENT

Connected with the Community and the World

At the heart of the Evans School is an active role in public life. Our wealth of expertise is shared with nonprofits, government agencies, advocates, NGOs, policymakers, and companies working to improve society in the U.S. and abroad. These real-world connections become lifelong partnerships that strengthen our ability to find practical solutions to emerging policy and management issues.

Humphrey Fellows Program Celebrates 20th Anniversary

In autumn 2007, the Evans School welcomed its 20th class of Hubert H. Humphrey Fellows, 16 midcareer professionals from 14 different countries working in the fields of public policy and management. Humphrey Fellows take part in one year of non-degree study at the Evans School to gain hands-on experience of how the work in their individual professions is conducted in the United States. The University of Washington is one of only 15 universities with Humphrey Fellows, and the Evans School has hosted more than 230 fellows from at least 90 different nations since 1987. Their presence provides an international perspective on public policy issues that cross national boundaries and enriches the experience of everyone at the Evans School. The Humphrey Fellowship program is administered by the Institute of International Education and primarily supported by the U.S. Department of State Bureau of Educational and Cultural Affairs.

By the People Event Engages Citizens in Housing Issues

By the People is a special project to bring the views of informed, "ordinary" citizens to a national discussion on the important issues of the day. The Evans School was proud to convene one of 12 *By the People* events held across the nation in 2007. Eighty-six randomly selected King County residents spent a day at the Evans School discussing the challenges of the high cost of housing in our region. Recorded by KCTS Television the event was broadcast locally on KCTS and nationally as on PBS as part of the *By the People*

"Dialogues in Democracy" documentary. Part of the Evans School's Civic Engagement for the 21st Century project, this event was made possible by grants from the W.K. Kellogg Foundation and the Rockefeller Brothers Fund distributed through MacNeil/Lehrer.

Cascade Center Supports Public and Nonprofit Managers

A nationally recognized management training center, the Cascade Center at the Evans School offers more than 25 different leadership courses for senior and midlevel managers. The Cascade Center will provide training for more than 700 professionals in 2007-2008 through programs designed to help on-the-job managers and leaders develop their skills, make their programs more effective, and increase customer and employee satisfaction.

Hands-On Experiences for Students

Evans School students combine classroom learning with internships and community service in agencies and organizations locally and across the globe. These community connections provide priceless real-world experiences that complement their studies and ensure they graduate ready to contribute to the greater good.



2006-07 Donors continued

Lisa M. Gordanier and James K. Richards
 Arien B. Grabbe
 Susan K. and Kenneth B. Gressett
 Lindsey A. Greto
 Calvin A. and Doy Groenberg
 Joseph A. and Mary Gross
 James L. and Gayle B. Halmo
 Dana R. and Michael Halter
 Jessica T. and Brett W. Hamilton
 Roeland V. Hammerschlag
 Lloyd F. Hara and D. Elizabeth Anderson
 Donald M. and Gayle Harris
 David S. and Cynthia Harrison
 Michael R. Harrison
 Anne E. and Thomas Hatley
 Carl A. and Carol Haugerud

Janet S. Hayakawa and Ferdinand A. Lyttle
 Susan C. Hayes
 Erin C. and Sean J. Henderson
 Donna C. and Steven F. Hengeveld
 Charles J. and Donna C. Henry
 Nora J. and Greg Hightower
 Zack Hill
 Thomas E. Hington
 Gwyn D. Hinton
 Hai H. and Ben-Sam Ho
 John F. and Tina Hodgins
 Dawn E. Hoff and Joseph Neifert
 Benjamin C. Hole
 Stephen L. Holt and Virginia P. English
 Margaret H. Hornbaker
 Marsha L. Huebner

Jarlath J. Hume
 David R. and Frances Hutchinson
 John and Norma Ickis
 Klaus and Ellin Jaeger
 James P. and Wendy A. Jaquet
 Connie R. Johnson
 Michael K. and Denise Johnson
 Neal C. Johnson and Kate J. Plaisier
 Rick L. and Margaret C. Johnson
 Nathalie G. Jones
 Carol L. Kaiser
 Paul R. and Cherie S. Kangas
 Sabrina Karklins
 Rita A. Keating
 Michael A. Kern and Ellen E. Eskenazi
 Marieka M. Klawitter
 Rachel G. and David H. Kleit

Abigail L. Klingbeil
 George W. and Ann Kloeppel
 Sunny D. Knott
 Tyler P. Koepke
 F. W. and Ada H. Koop
 William I. Kreuter and Judith Blinder
 Tanya Lalwani
 Lynn L. and John Lampe
 Linda L. and Erin Landers
 Malia K. Langworthy
 Brooke A. Leary
 Kenneth A. LeBlond
 Alan C. and Janie Lee
 Andrea M. Lee
 Jesse L. and Alice A. Leister
 Sara E. Levin
 Adam Lewis
 Steven R. Lewis
 Christopher G. and Cynthia Lockwood

Public Service Clinics Connect Students with Real-World Challenges

Now in its 10th year, the Evans School's Public Service Clinics have connected more than 200 students with public and nonprofit agencies to evaluate existing programs, create strategic plans, analyze policies, and design new programs. Students in the clinics gain real-world experience while forging lasting relationships with the partner agencies they serve. In 2008, more than 30 students will complete projects for agencies including Impact Capital, Public Health – Seattle/King County, American Rivers, Washington State Utilities and Transportation Commission, Woodland Park Zoo, and more.

New Opportunities Created for Students at the City of Seattle

Thanks to a partnership with the City of Seattle, five Evans School students gained hands-on experience in city government in 2007 as part of the new City of Seattle Municipal Fellows program. Students completed paid internships in the Office of Policy and Management, Mayor's Office for Senior Citizens, and the departments of Finance, Transportation, and Planning and Development.

Student-Organized Panels Address Viaduct, Transportation Proposition

Student groups focused on urban and environmental policy organized panels on the viaduct and the Proposition 1 transportation levy shortly before the elections addressing these controversial transportation issues. Working with Evans School faculty, including Distinguished Visiting Practitioner-In-Residence Norman Rice, students and the public learned about each issue from top-level policymakers and community leaders, including King County Executive Ron Sims; Mayor of Seattle Greg Nickels; David Dye, urban corridors administrator for the State of Washington; business and community leader John Stanton; and representatives from Microsoft and the Sierra Club.



Project Focus:

CIVIC ENGAGEMENT FOR THE 21ST CENTURY PROJECT

Led by Norman Rice, former mayor of the City of Seattle and distinguished visiting practitioner-in-residence at the Evans School, the Civic Engagement for the 21st Century Project is creating new models of civic engagement that provide innovative methods for increasing civic participation and creativity to solve complex policy issues.

With generous support from The Boeing Company and an anonymous donor, the project is working to renew and transform civic engagement into a process that better informs citizens, fosters improved decision-making, capitalizes on ideas from a broad spectrum of individuals, and improves the quality of life for current and future generations.

Leveraging Rice's experience engaging communities as mayor, the project uses a new model to host a set of forums at the Evans School on regional policies that address issues affecting urban communities such as affordable housing, homelessness, and neighborhood planning.

Nubia I. Lopez
Candida C. Lorenzana
Beth Lovelady and Florian Leischner
Steven G. Lozano
Lisa A. Lusk
Gordon C. MacFarland
Ted and Karen Madison
Lisa J. and Benjamin P. Maguire
Lubna M. Mahadeen
Susan Mair
Wayne C. and Dora L. Mann
Jon P. and Anne D. Manos
Clifford V. Marks
Jennifer L. and Charles Martin
Ruth W. Martinez
Ervin J. Massinga
Kelly G. McCaffrey
Mary L. McClintock and Thomas Balmer

Margaret McGraw-Scherer and Scott Scherer
Paul R. Meyer
Valerie Meyer
Theresa A. Meyer-Gabel and Thomas W. Gabel
Connie M. and David Michener
Paula A. Mishima
Kristina M. and Lockett T. Montague
Paulette C. Morgan
Abdul W. and Aisha Najim
Karla A. Nemeth
Emily J. Newcomer
Jennifer L. Newton
David C. Nielsen
Marianne C. and Robert Norton
Jessica A. Nowakowski
Christina E. and Christopher J. O'Claire

Steven E. Oien and Hanne Thiede
John D. and Sharon Okamoto
Fatima Oswald
Suzanne Pardee
Christie D. Parker
Perry Parsons and Jennifer Joseph
Kristen E. Paynter
Heidi R. Peterson
Robert C. and Susan K. Peterson
Ellen I. and David A. Petre
Thomas E. and Nina S. Pfeiffer
Erin K. Pflum and Claudia K. Becker
Nathan Phillips
Karen M. Place
Margo A. Polley
George F. and Gail F. Pollock
Robert A. and Dianne K. Polson
Michael M. and Alice Powell

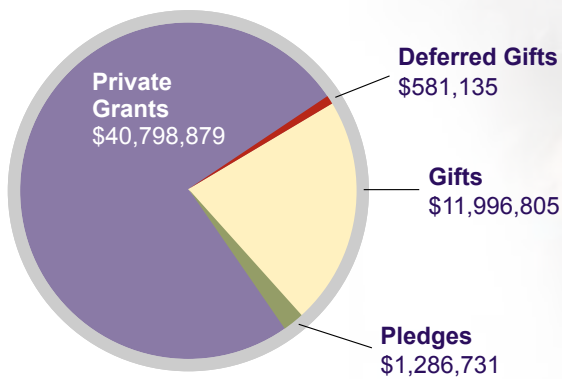
Kristin Pula
Craig and Shirley Purkey
Marybeth Queral
Robert S. and Alayna C. Raitlon
Stephanie K. Raines
Marcela P. Ramirez
Sarah K. Randolph
Carl N. and Louise Rautenberg
Chad A. Raymond
Bea Alise M. and David L. Rector
Sheri Reder and Daniel L. Carlson
Margaret Reynolds
Marcus M. Riccelli
Bruce A. Ritzen
James V. Roberson and Lisa Peck
Jack D. and Judith M. Robinson
Barbara J. and David R. Rood
Sarah A. Rosengrant
Gayle I. Rothrock

EVANS SCHOOL PRIVATE SUPPORT

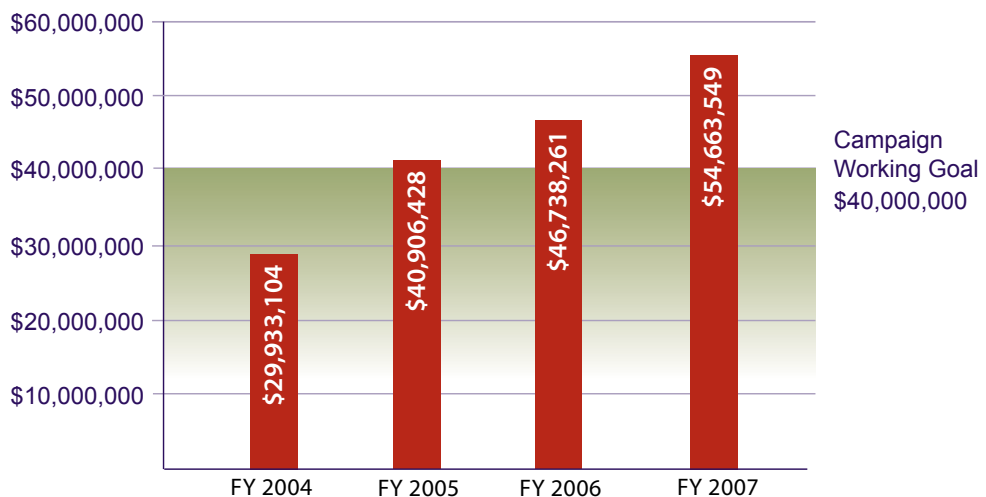
Friends and graduates continue to make extraordinary financial contributions to the Evans School for a variety of uses.

Evans School Campaign Contributions by Source

(July 1, 2000 and June 30, 2007)



Evans School Campaign Contribution Growth



2006-07 Donors continued

Paul M. Rucker and Noy Saetia-Rucker
 Beth L. Salaguinto
 Yolanda A. Sanchez
 Allen R. Sandico
 Emily T. and Christopher Sasnett
 Jay A. and Meg H. Satz
 John D. and Stephanie Saven
 Christine J. and Edward J. Schaefer
 Janet S. and Richard W. Scholtes
 William M. and Kathleen Schrier
 Rosemary Schwartz
 Harold P. Scogin and Patricia Gilmore

Carl A. See
 Sarah A. and Paul G. Shanahan
 David S. and Bonnie B. Shannon
 Catherine N. Sheehy
 Viet Q. Shelton
 Joel M. Sherman
 Debika Shome
 Peggy Shull
 Gretchen Snoey
 Susan S. Sodergren-Kroll
 Rachel H. and Ron Solemsaas
 Stephanie M. Solien
 Arnold M. Sowell
 Dean A. and Jennifer H. Stephens
 Janet K. Stormes
 Catherine M. Suter
 Fred E. Swenson

Matthew J. Szelag
 Bruce M. and Carolyn Tanner
 Michael J. and Winifred Tate
 Charles A. and Diane D. Taylor
 Paul W. and Elaine V. Taylor
 William G. Templeton
 Jason J. Thibedeau
 Erica A. and Eric M. Thorson
 Caroline A. Tillier
 Betsy A. Troutman
 Joseph and Florine Tuggle
 William T. Turnbull
 Calvin M. and Ann Uomoto
 Tricia Vander Leest
 Kasandra S. Verbrugghen
 William A. Walk
 Sharon E. Walker

Angela Wallis
 Leslie H. and Timothy C. Wallstrom
 Amy M. Webb
 Laura L. Weese
 Luke R. and Janet Weisberg
 Lynn E. Wetzler
 Amy E. Wheeless
 Richard C. and Janet Wilkie
 Robert W. and Carol Wilkinson
 Sally V. Williamson
 Kathryn J. Wise
 Benjamin and Ruth T. Woo
 Tsung-Cheng Wu
 Owen H. Yamasaki
 David K. Zabell
 Carter and Maureen Zerbe
 Daunne P. Zinger

ENDOWMENTS

We are grateful for the loyal and generous support of alumni and friends through endowment funds at the Evans School. Since our last report, we are pleased to announce the establishment of ten new endowments. The legacy created by these funds both honors the donors and creates opportunities for future students and faculty.

NEW ENDOWMENTS

Civic Engagement for the 21st Century Endowed Professorship enhances the Evans School's ability to recruit and retain distinguished faculty in civic engagement, providing increased capacity in teaching, research, and public service.

Civic Engagement for the 21st Century Endowed Fellowship helps financially challenged graduate students at the Evans School defray the cost of attending the University of Washington.

Civic Engagement for the 21st Century Endowment for Excellence provides programmatic support for the Evans School of Public Affairs, and funding for operations of the Civic Engagement for the 21st Century Project that includes, but is not limited to: developing case studies, seminars, panels, and workshops to disseminate knowledge; visiting speakers; and events.

Dr. Constance W. and Norman B. Rice Endowed Fellowship was established by two of the Evans School's most distinguished alumni, and supports outstanding master's and Ph.D. students who are from diverse backgrounds.

Jonathan Brock Endowed Fellowship was established by students and colleagues who wish to honor and thank Professor Jon Brock for the dedication, skill, and energy that he brings to the classroom and to the field of public management. The fellowship supports outstanding graduate students studying management, leadership, and/or conflict resolution in the public or nonprofit sectors.

Richard O. Zerbe Endowed Fellowship was established by Professor Richard O. Zerbe and his wife Diane to support graduate students studying cost-benefit analysis or closely related subjects. This fellowship honors Dr. Zerbe's distinguished career of teaching, research, and service.

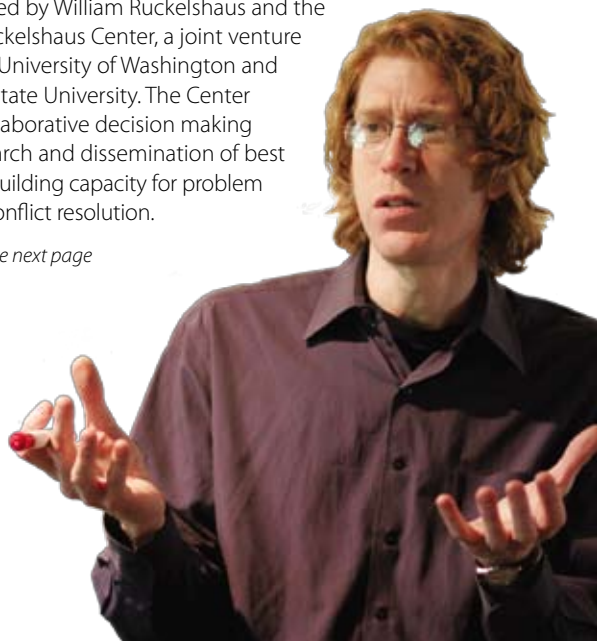
Sandra O. Archibald Endowed Fellowship, established by Dean Archibald and her husband, Chet McCorkle, supports outstanding master's and Ph.D. students.

Theodore Plotnick Endowed Fellowship was established by Professor Bob Plotnick and his wife, Gay Jensen, in memory of Bob's father, Theodore Plotnick. This fund supports Ph.D. students researching and writing their dissertations.

William and Terrea Zumeta Endowed Fellowship was established by Professor William Zumeta and his wife Terrea, to support outstanding master's and Ph.D. students. This fellowship honors Dr. Zumeta's distinguished career of teaching, research, and service.

William D. Ruckelshaus Center Foundation Endowment was established by William Ruckelshaus and the William D. Ruckelshaus Center, a joint venture between the University of Washington and Washington State University. The Center enhances collaborative decision making through research and dissemination of best practices by building capacity for problem solving and conflict resolution.

continued on the next page



2005-2006 DONORS

ORGANIZATIONS

\$1,000,000 and more
Bill & Melinda Gates Foundation

\$100,000-999,999
The Boeing Company
The Annie E. Casey Foundation
Cummins Engine Foundation
Ewing Marion Kauffman Foundation
Institute of International Education
Microsoft Corporation
Northwest Area Foundation
Stuart Foundation
The Lynde & Harry Bradley Foundation
United Way of King County

\$10,000-99,999
Memphis Tomorrow
Scottish Rite Scholarship Foundation of Washington
Spencer Foundation
The Henry M. Jackson Foundation
Urban Institute
VillageReach
Weyerhaeuser Company Foundation
Women's Funding Alliance
WSU Foundation

\$1,000-9,999
Arthur Bauer & Associates, Inc.
Dayville Hay & Grain, Inc.
HomeStreet Bank
IBM Corporation

International Research & Exchange Board
Lawrence O. Picus and Associates
McElroy Trust
Vanguard Charitable Endowment Program
Washington City/County Management Association
Washington First International Bank

\$500-999
Anonymous Gifts
The Seattle Foundation

\$1-499
Ai-Lien N. Nguyen, D.M.D., P.S.
Bellfree Contractors, Inc.
Cabot Dow Associates, Inc.
Community Foundation of Greater Chattanooga

ENDOWMENTS

CONTINUING ENDOWMENTS

Brewster C. Denny Endowed Fellowship was named in honor of Professor and Dean Emeritus Brewster Denny, founder of the Graduate School of Public Affairs. This fellowship supports students who are committed to excellence in public service.

Dael L. Wolfe Endowment for Excellence was established in honor of Professor Dael Wolfe, an influential faculty member whose career combined science and public affairs. The endowment supports a lecture series that brings to Seattle a distinguished scholar or specialist in the field of science and public policy.

Daniel J. Evans Endowment for Excellence in Public Service supports graduate fellowships, lectureships, educational research partnerships, public forums, professorships for visiting or permanent faculty, research awards to faculty or students, and visiting practitioners-in-residence.

Elaine Chang Endowed Fellowship for International Peace and Development, the first fellowship to honor a staff member and alumna of the Evans School, was established by an anonymous donor and many alumni and friends, supports outstanding students who are working in internships focused on international development and peace issues.

Evans School Alumni Endowment provides fellowships to students preparing for careers in public service.

George A. Shipman Endowed Fellowship offers support to outstanding students pursuing careers in public service. Professor George Shipman was the founder of public administration education at the University of Washington.

Governor Gary Locke Endowed Fellowship honors the first Asian-American governor of a mainland state and the first Chinese-American governor in United States history. At

the conclusion of his second term as Governor of Washington state, friends and supporters established this fellowship to create a permanent legacy in Governor Locke's honor. This fellowship will serve as encouragement for Asian/Pacific Islander students to follow in Governor Locke's footsteps by preparing for and entering careers in public service and politics.

Harry A. and Ann L. Pryde Endowed Fellowship supports outstanding students who are committed to excellence in public service. Fellowship awards will help create educational opportunities for students at the Evans School. This fellowship will also provide internship opportunities for Evans School students to work in Washington, D.C., exposing them to policy issues at the national and global levels.

Henry M. Jackson Endowed Fellowship is given in honor of the late U.S. Senator Henry M. "Scoop" Jackson, this fellowship supports students pursuing careers in environmental policy and natural resources management.

Hubert G. Locke Endowed Fellowship provides support for students pursuing internships in nonprofit organizations devoted to social justice issues.

Marc Lindenberg Endowment for Excellence supports the Marc Lindenberg Center for Humanitarian Action, International Development and Global Citizenship. This center enables students and the broader community to more clearly understand global connections and equips them with the skills and knowledge to create a better, more humane world.

Margaret T. Gordon Endowed Fellowship, established by Professor and Dean Emeritus Margo and Professor Andy Gordon, and supported by many of her students, colleagues, and friends to commemorate Dean Gordon's retirement, supports outstanding graduate students at the Evans School.

continued on page 13

2005-06 Donors continued

Freddie Mac
Greenwood Publishing Group
Hilands Dentistry
McKinley Nielsen Associates Inc.
N.W. Forest Resources
Management

INDIVIDUALS

\$1,000,000 and more
William H. and Melinda Gates

\$10,000-99,999
Anonymous Gifts
Elaine Chang and Jonathan Brock

Charles T. and Nancy Collins
Daniel J. and Nancy Evans
Andrew C. and Margaret T. Gordon
Gerald and Carolyn H. Grinstein
Harry A. and Ann L. Pryde

\$1,000-9,999
Virginia L. Anderson
Anonymous Gifts
Sandra O. Archibald and
Chester O. McCorkle
Arthur E. and Sandra K. Bauer
Glenn Bell
Inez N. Black
Angela M. and Robert Day
Paul B. and Anne S. Demitriades
Brewster C. and Patricia S. Denny
David J. Durban

Lynn T. Elmore and John J. Boehrer
Stacy L. Fisher and Jonathan S.
Solovy
Paul R. Fletcher and Susan K.
Donaldson
Linda K. and Wayne K. Fox
Helene D. Gayle
Joanne R. and Bruce A. Harrell
Jan Hendrickson and Mic R.
Dinsmore
Paul T. and Alice H. Hill
John K. and Carol J. Hoerster
Tonia and Michael Hsieh
Catherine S. Lindenberg
Hubert G. Locke
Stephen I. and Elaine Y. Locke
Kevin A. McCall and Vickery J.
Prongay

Diane L. and Robert H. McDaniel
Robert D. Plotnick and Gay L. Jensen
Nancy F. and Benjamin P. Remak
Christina and Timothy M. Smith
Colleen S. and George V. Willoughby
Richard O. and Diane Zerbe
William M. and Terrea O. Zumeta

\$500-999
Shirley C. and Ralph D. Anderson
Anonymous Gifts
Mary E. Bohman and Paul R. Gibson
John C. and Leslie K. Breitner
Roselyn and Howard Brock
Karen S. and Dean S. Cooper
Elizabeth M. and Daniel W. Crofts
Jay A. and Susan E. Fredericksen
Barbara V. and Tom Gardner
Jerome L. Hillis and Diana H. Gale
William and Patricia Jacobs

Donor Focus:

HARRY AND ANN PRYDE

The Harry and Ann Pryde Endowed Fellowship was fulfilled in 2007 and reflects the commitment and support of two proud alumni of the Evans School and the University of Washington. Harry (MPA '57) and Ann (BA '56) Pryde decided to establish the fellowship in support of outstanding graduate students who are committed to excellence in public service. The Harry and Ann Pryde Endowed Fellowship also provides internship opportunities in Washington, D.C. so students may gain insight into national and global policy and explore job opportunities in markets outside of Seattle.

The Prydes made an initial gift of \$25,000 to the Evans School in 2002 to support internships in Washington, D.C. In 2005, they endowed the Harry A. and Ann L. Pryde Endowed Fellowship which received a match from the University of Washington's Matching Gift Initiative. To honor the 50th Anniversary of Harry's graduation from the Evans School (then known as the Institute of Public Affairs), the Prydes doubled their initial commitment, qualifying for additional matching funds from the State of Washington.

Harry Pryde is a former director of the Federal Home Loan Bank of Seattle, a commissioner of the Washington State Housing Finance Commission and past president of the Building Industry Association of Washington and the Master Builders Association of King and Snohomish Counties. He is an inductee in the Washington State Hall of Fame and the University of Washington Construction Management Hall of Fame.

Harry has served in numerous community organizations, and he and Ann are active philanthropists and volunteers with many civic, arts and academic organizations. In 2006, Harry Pryde was named a Distinguished Alumni of the Evans School.



Paul T. Kallmes
Lawrence C. Kenney and
Phyllis Gutierrez Kenney
James F. and Louise Lane
Patricia G. McKay
Paul R. Meyer
Ian Moncaster and Carey Moore
David M. Myers
Dean B. Pedersen
Mollie V. and Louis H. Pepper
Mary X. Pham and
Colin-chuong H. Nguyen
Lynn G. Schrader
Steven R. and Margaret C. Smith
Susan S. Sodergren-Kroll
Eileen N. Takeuchi and Donald F.
Rapp
Ken and Theresa Williams
Cynthia K. Zehnder

\$1-499
Carrie A. Abendroth
Crystal C. and Kenneth S.
Alexander
David R. and Nita Anderson
Evangeline E. Anderson
Richard D. Andrews
Anonymous Gifts
Marlin J. Appelwick and
Sharron P. Sellers
Sean R. Ardussi
Robert G. and Sherry D. Arnold
Steven H. and Carol D. Arnold
Neil T. Asaba
Rebecca and Anthony Aue
Gary J. Ausman
Catherine M. Babcock and
Jeffrey C. Beyer

Adela Y. Backiel and William Banzhaf
John S. and Catherine S. Baker
Aileen M. Balahadia and
Michael Panlasigul
Sandra L. Ballinger
Connie A. Barndt
Theresa E. Barreras
David C. and Raneae M. Bassett
William A. Beck
Roger J. Bell
Carol J. and Arthur H. Berg
Kim R. and Raphael A. Bernier
Kelly R. Bidlingmaier
Donald L. Billen and
Luann M. Wangsness
Sherri Bloomer
Elizabeth J. Blue
Nora G. and Theodore Boretti

Robert C. Boruchowitz and
Floye N. Sumida
Dustan Bott
Marshall D. and Connie S. Boyd
Mary E. Brant
Eric C. Bratton
Lauraine D. Brekke
Christopher Bretherton and
Alison Cullen
James A. Bricker
Herbert M. and Shirley G. Bridge
Michael C. Brown
Michael D. Brownell
Margo M. Buckels and Robert
Miyashiro
John R. Burbank and Pamela
MacEwan
Kristen G. and Keith Burnham



Donor Focus:

COLLEEN S. WILLOUGHBY

“BY STRENGTHENING THE CONNECTION BETWEEN PHILANTHROPY AND CIVIL SOCIETY THROUGH THIS EVANS SCHOOL PROFESSORSHIP, WE CAN BROADEN THE BASE SO THAT MORE PEOPLE CAN PARTICIPATE IN THIS SOCIAL ENTERPRISE.”

Colleen Willoughby is no stranger to philanthropy. Willoughby is the founder of the Washington Women’s Foundation, established in 1995 to address the philanthropic needs of the greater Seattle community. Since its founding, and with Willoughby at the helm as the group’s president, Washington Women’s Foundation has grown to include 475 members and awarded grants totaling more than \$7.4 million.

Willoughby graduated from Whitman College in 1955, and her connection with the Evans School began in the 1990s when former Dean Margo Gordon asked her to join the Evans School Visiting Committee. Two years ago, Willoughby was installed as chairwoman of the Visiting Committee, providing valuable counsel and support to the Evans School.

In 2006, the Colleen Willoughby Endowed Professorship in Nonprofit and Philanthropic Studies was proposed at the Evans School. When completely funded, this professorship will allow an interdisciplinary team to develop the Evans School’s research capacity on nonprofits and philanthropy at the local, regional, and national levels. The professorship will be the focal point for the best and brightest academic minds to connect with civic and business leaders and increase our understanding of giving, volunteering, fundraising, and nonprofit management by donors and nonprofit organizations.

2005-06 Donors continued

Richard A. and Kristin Bushley
 Pete A. and Carole Butkus
 Sarah B. Butler
 Peter J. and Linda Bylsma
 Carrie C. Byron
 Kate and Jerry Campbell
 Margaret M. and Donald S. Campbell
 Nancy M. Campbell
 Lauren B. Candia
 David J. and Penny G. Carothers
 Jonathan Carver and Christina Pease
 Ray A. and Angela R. Ceaser
 Deepa K. Chadeesingh
 Ina Chang and Todd Campbell
 Kuei-Sheng and Ju-Fong L. Chang
 Richard U. and Margaret A. Chapin

Jodi I. Charles
 Kelly A. Ciotti
 Amy A. Clark
 Odette M. Clark and Tim Campbell
 Lauryne Clarke
 Catherine A. Clemens and Daniel R. Speth
 Richard A. Cochrane
 Jerry B. and Marilyn A. Coffman
 Jill Cole
 Linda W. and Melvin Collart
 Araceli Contreras and Robert Hutsell
 Gerald W. and Linda Cormick
 Catherine Cornwall and Jim Swenson
 Anita V. Crofts
 Edward W. Crowe
 Leslie A. Crowe

Heidi Curtiss
 Heather A. D’agnes
 Kathryn A. Davis
 Paul W. and Diana Dennett
 Sara Deruyck and Christopher Hansot
 Chelsey L. Devenyns
 Kelly A. and Adrian Z. Diaz
 Dwight D. and Susan Dively
 Diana Dollar
 David A. Dorfman
 Cabot and Linda Dow
 Hanh B. Duong
 Harold S. Dutton
 Elissa C. Dyson and Clark D. Ashworth
 Daniel P. Eder
 Leta N. Edwards
 Michael B. and Carol Eisenberg

Lawson A. and Sherry J. Elliott
 Gayle A. Engel-Sparks and Rod Sparks
 Siri Erickson-Brown
 Margaret E. Estep
 Timmie R. Faghin
 Daniel J. Farrell
 Barbara M. Feasey and William L. Bryant
 Forrest L. and Ruth Fenstermaker
 Laura M. Feola
 Norma B. Ferriz
 Christopher T. Fiori
 Jamie Flaxman
 Lauren G. Fleming
 Sophia Flores-Cruz
 Elizabeth and E. Michael Flynn
 Suzanne Fortier and Joel S. Bielawsky
 Anthony C. Foster

Student Focus:

SHAYNA HIGA

A native of Oahu, Hawaii, Shayna Higa headed east for her undergraduate studies. She majored in economics and biology, and planned to attend law school. However, teaching English in China piqued Higa's interest in international development, and a job with the Department of Business, Economic Development and Tourism for the State of Hawaii sparked an interest in public service. Now in her second year at the Evans School, Shayna is refining the skills she wished she had when working for the state of Hawaii.

Higa says that receiving the Governor Gary Locke Endowed Fellowship and Henry M. Jackson Endowed Fellowship "helped relieve much of the anxiety of paying for my education." Seattle was a lure, as was her experience during the spring open house for students admitted to the Evans School. She is also grateful for a Foreign Language and Area Studies Fellowship that enabled her to study Chinese over the summer at Capital Normal University in Beijing, China.

Higa would like to work in China in the future, and is also considering work in state government or the legislature. Studying public administration at the Evans School has allowed Higa to gain a broad spectrum of skills she knows will be important for her career in public service and international development.



"[FELLOWSHIP FUNDS] HELPED RELIEVE MUCH OF THE ANXIETY OF PAYING FOR MY EDUCATION."

endowments continued

Micki E. & Robert J.C. Flowers Endowed Fellowship supports students of diverse backgrounds pursuing careers in public affairs or related fields.

Morton Kroll Endowed Fellowship, established by Susan Sodergren Kroll and many of Kroll's students and friends, provides financial assistance to a student working at an internship in arts management.

Nancy Bell Evans Endowment for Excellence supports The Nancy Bell Evans Center on Nonprofits & Philanthropy. The Center's mission is to enhance the understanding and vitality of the nonprofit sector through research, education, and community engagement.

Robert J. Lavoie Endowed Fellowship provides funds to outstanding students who are preparing to work in public service. Lavoie served as a Deputy Mayor of Seattle.

Weyerhaeuser Endowed Professorship in Environmental Policy
The Evans School of Public Affairs is recognized widely for excellence in environmental policy and natural resources management teaching, research, and service. Its faculty members' expertise uniquely bridges the concerns of environmental science, public policy, and business, and thus fosters effective, collaborative problem solving. In support of the Evans School of Public Affairs, the donor has established the Weyerhaeuser Endowed Professorship in Environmental Policy to enhance environmental science and public policy research.

Christopher B. Foster
Patricia A. and Michael Foster
Richard A. Frank
B. Robert and M. Elaine Franza
Elise D. Frisella
Michael E. and Margaret Fuson
Virginia M. and Kurt R. Galle
Clark L. and Eleanor G. Gaulding
Michael J. Gedeon
Sylvia R. Gil
Lise Glaser
Dana Gold
Alan E. Goldberg
Beth E. Goldberg
Steven M. and Joan Goldblatt
Dan D. and Cory L. Goldhaber
Robert M. Goldstein
Maria E. Gomez
Jennifer C. and David Gorbet

Arien B. Grabbe
Steven R. Greimann
Susan K. and Kenneth B. Gresselt
Calvin A. and Doy Groenberg
Joseph A. and Mary Gross
Misti D. and David G. Groves
Mary Kay Gugerty and Daniel F. Siemann
Michael J. Gundle and Nina L. Schorr
David L. Hall
Kimberly A. Hall
Margaret W. Hall
James L. and Gayle B. Halmo
Dana R. and Michael Halter
Amy Hamaker
Alison W. Han
Sierra Hansen and Barbara E. Wilson

Kari Hanson
Lloyd F. Hara and D. Elizabeth Anderson
Leighanne Harris
David S. and Cynthia Harrison
Mark L. and Maria S. Hatcher
Anne E. and Thomas Hatley
Carl A. and Carol Haugerud
Janet S. Hayakawa and Ferdinand A. Lyttle
Susan C. Hayes
Daniel F. Heldring
Donna C. and Steven F. Hengeveld
Charles J. and Donna C. Henry
Juliette G. Hersum
Jennifer D. Hibbard
Megan Hill
Thomas E. Hingson

William M. and Judy Hinkle
Gwyn D. Hinton
Edwin and Tamiye Hirahara
Bruce Hoefft and Kay M. Treakle
Dawn E. Hoff and Joseph Neifert
Benjamin C. Hole
George O. and Diana S. Holland
Noel T. Holley
Stephen L. Holt and Virginia P. English
Jonathan B. Hommer
Maya S. Hunnewell
Nobuaki Iida
Donald and Karen Ingle
Ruth Ittner
Patricia M. James
Barbara S. Jans
Jason C. Jarrell
Lee and Betty Joffee

Student Focus:

SOPHIE NAMY

Traveling and working in Ecuador and Asia helped Sophie Namy realize she needed additional skills to prepare her for a meaningful career in international development. Sophie is pursuing her MPA concurrently with a Master of International Studies (MAIS) from the Jackson School, and a Global Health Certificate. She is interested in the interdisciplinary aspects of these programs which have brought diverse perspectives to the heart of her studies.

As a recipient of the Elaine Chang Fellowship for International Peace and Development, Namy was able to accept a low-paid internship with UNICEF in India during the summer of 2006. She spent ten weeks investigating the impact of village planning interventions on vulnerable populations. Namy continued her analysis after the internship concluded while writing her degree project, which won the Evans School's Pealy Prize for best degree project in 2007.

As Namy looks beyond graduate school, she's preparing for a career in the development field. "It's been incredibly stimulating to work with faculty and students at the Evans School and Jackson School. I now have a broader understanding of today's complex global realities, and the diverse approaches people take in order to make a difference."



SPECIAL OPPORTUNITY

An anonymous donor has committed to match, dollar for dollar, any new gifts and pledges to the Elaine Chang Endowed Fellowship for International Peace and Development, up to \$5,000, through December 31, 2008.

About Endowments

An endowment is a permanent fund established for a specific purpose, whether for faculty, student, or general program support. Donors may designate the fund in his or hers own names, as a tribute to a friend or loved one, or to honor a professor or mentor. Endowments can be established with cash, securities, real estate, or through a bequest. Gifts to endowments are invested to create a lasting financial resource that grows in perpetuity. Each quarter, the endowment distributes a portion of its total return to support the purpose specified by the donor. Gifts to establish new endowments or to existing endowments are added to the University's Consolidated Endowment Fund (CEF), a professionally managed and diversified investment fund. The UW Board of Regents establishes CEF investment policies and regularly reviews the fund's management and performance.

"THIS INTERNSHIP WAS THE PERFECT OPPORTUNITY FOR ME TO INTEGRATE MY PASSIONS FOR VISUAL RESEARCH AND DEVELOPMENT WORK. I GAINED VALUABLE FIELDWORK EXPERIENCE THAT HELPED FOCUS MY INTERESTS AND CONTEXTUALIZE MY ACADEMIC STUDIES."

2005-06 Donors continued

Cara H. Johnson
Jennifer J. Johnson and John N. Storey
Michael K. and Denise Johnson
Neal C. Johnson and Kate J. Plaisier
Nancy Joseph
Carol L. Kaiser
Gary K. Kamimura
Paul R. and Cherie S. Kangas
Kelci R. Karl
Aaron Katz and Kate Dougherty
Mary Keltz and Thomas Knappenberger
Michael A. Kern and Ellen E. Eskenazi
David I. Keyes and Laura E. Gibbons

Gerrit A. Kischner and Nancy A. Bacon
Rachel G. and David H. Kleit
George W. and Ann Kloeppel
Kathryn Knox & Lori Miller
Karen Ko and Gary D. Johnson
F. William and Ada H. Koop
Paul B. and Ludmila Kraabel
Ronald and Mavis Kreizenbeck
William I. Kreuter and Judith Blinder
Louise R. Kulzer
Jennifer L. Labrecque
Linda Lake
Lynn L. and John B. Lampe
Linda L. and Erin Landers
Kelli Y. Larsen
Linda A. Lee
Sara E. Levin
Kathryn L. Lewis

B. Parker Lindner
Martin Linsky and Lynn Staley
Susan R. Liu
Christopher G. and Cynthia Lockwood
Erica Lomeli
Hazel V. Lorrin
Sabrina Lou
Lisa A. Lusk
Ted and Karen Madison
Lisa J. and Benjamin P. Maguire
Christina B. Maiers
Caroline A. Maillard
Susan Mair
Guillermo Maldonado Ibarguen
Matthew S. Markoff
Clifford V. Marks
Kirsten L. Martens
Jennifer L. and Charles Martin

Ruth W. Martinez
Christina D. Marx and Greg Noel
Mary L. McClintock and Thomas Balmer
James J. McDermott
Margaret McGraw-Scherer and Scott Scherer
Lynn McKiernan Ngari and Joseph Ngari
Maureen C. Meehan
Jacqueline Meijer-Irons and Justin B. Irons
Rosemary C. Menard
Jennifer and Mark Mennucci
Marie K. and Joseph P. Mentor
David L. Messerschmidt and Elizabeth E. Long
Connie M. and David Michener
Shannon G. and Michael E. Mills

Donor Focus:

BILL CENTER

"Focus on doing things that really help" is what Bill Center (MPA '78) does in his "new career as a volunteer." Center, a 35-year Navy veteran, has been active at the Evans School since he graduated, and more so in the last ten years since returning to the Seattle area. From teaching foreign policy to serving on the Visiting Committee and working with the Hubert H. Humphrey Fellows, Center feels his experience as a volunteer has been invaluable. "Any contributions I have made as a volunteer pale in significance to the education, energy and opportunity for engagement afforded in return."

Center developed his commitment to service during his time in the military. The "deferred compensation" he now receives as a result of his military service gives him the ability to do volunteer work with service-oriented organizations. He says volunteering keeps him grounded and enhances his understanding of, and appreciation for, the challenges facing our global community. "There's no easy solution to challenges like extreme poverty, but we must focus on what works and trying to better understand the tradeoffs involved." Center volunteers at the University of Washington and the Evans School because he feels it's a great place to work, he enjoys engaging with young people, and he gains a new understanding of issues that a higher education environment fosters.



"BY VOLUNTEERING AT THE EVANS SCHOOL I'M ABLE TO WORK WITH STUDENTS, FACULTY AND THE HUMPHREY FELLOWS ... AND IN THE PROCESS I LEARN SOMETHING PROFOUND AND IMPORTANT EVERY DAY."

The Dean's Club

Launched in 2005, the Dean's Club recognizes donors who contribute \$500 or more annually to funds within the Evans School.

Dean's Club members share our commitment to creating more effective public sector and nonprofit organizations, new partnerships for stronger communities, and a renewed trust in government.

Benefits of joining the Dean's Club include special event invitations, one-on-one or small group discussions with the Dean, state of the school updates, and priority notification of Evans School activities.

Paul and Sharen Moessner
Robin Mohr
Max Moncaster
Kristina M. and Lockett T.
Montague
Phillip Morley and Llory C. Wilson
Margaret L. Morris
Susan M. and George R. Morry
Manette Moses
Margaret A. and Gay W. Mount
Gareth S. Myrick
Keiko and Tsukasa Namekata
Karla A. Nemeth
Laurie Nemzer
Sharon A. Newcomer
Ai-Lien Nguyen
Thanh-Dung R. Nguyen
David C. Nielsen
Lily Y. Ninburg

Tracy B. and Charles G. Nordhoff
Jan Nordlund & Chris Norlund
Donald S. Norman
John A. and Melanie Norris
Lois H. North
Phillip M. and Sandra B. Nudelman
Steven E. Oien and Hanne Thiede
Dennis J. O'Leary
Gregory A. Orwig
Erik R. Overleese and
Kristen M. Stouffer-Overleese
Alinda C. and Richard S. Page
Stephen B. Page and
Nancy E. Cohen
Suzanne Pardee
Heidi R. Peterson
James A. and Kathy B. Peterson
Robert C. and Susan K. Peterson
Ellen I. and David A. Petre

Thomas E. and Nina S. Pfeiffer
Erin K. Pflum and
Claudia K. Becker
Sandra Phinney
Laina M. Poon
Lois Price Spratlen and Thaddeus
H. Spratlen
Deeann B. and Richard B. Puffert
Craig and Shirley Purkey
Jeri Railton
Robert S. and Alayna C. Railton
Miriam W. Rappaport
Carl N. and Louise Rautenberg
Bea Alise M. and David L. Rector
Sheri Reder and Daniel L. Carlson
Jajuan R. Redmond
Robin Rettew & Peter Antolin
Maureen A. Rhea
Benjamin Richey

Erica L. and Benjamin E. Richey
Frances Ring
Bruce A. Ritzen
Patsy J. Rogers
Leonard J. and Christine M. Rolfes
Barbara J. and David R. Rood
Kate Roosevelt
Sarah Ross & Ranga Venkatesan
Patrick & Arline Roth
Gayle I. Rothrock
Paul M. Rucker and Noy Saetia-
Rucker
Jeffrey R. Rueckhaus
Beth L. Salaguinto
Emily T. and Christopher Sasnett
Jay A. and Meg H. Satz
John D. and Stephanie Saven
Karen L. Scheuermann
Eric H. Schinfeld

VISITING COMMITTEE

The Evans School Visiting Committee forms a bridge that connects the school with the larger community. The volunteers on this committee act as advisors and advocates, helping the school forge meaningful ties with students, alumni, donors, professional and community leaders, the state legislature, and the federal government.

Committee members serve the Evans School as mentors and role models for our students as well as examples of the distinguished public and nonprofit service our graduates have come to exemplify.

Virginia Anderson, President, SAFECO Foundation, MPA '75

Sandra O. Archibald, Dean, Evans School of Public Affairs

Linda Calbom, CPA, CGFM, United States Government Accountability Office

Bill Center, President, Washington Council on International Trade (retired), MPA '78

John Chapple, Hawkeye Investments, LLC

Lt. General Peter Chiarelli, U.S. Army, MPA '80

Chuck Collins, President, Colsper Corporation (retired), MPA '70

Kerry Coughlin, Communications Director - Americas, Marine Stewardship Council

Paul Demitriades, Principal, PB Demitriades Management & Consulting (retired), MPA '75, BA '55

Ronald P. Erickson, Businessman and Attorney

Daniel J. Evans, Daniel J. Evans & Associates, BS '48, MS '49

Nancy Bell Evans, Evans School Campaign Co-Chair

Robert Flowers, Washington Mutual (retired), MPA '68, BA '65

Karen R. Fraser, Senator, State of Washington, MPA '69, BA '66

Dr. Helene Gayle, President/CEO, CARE

Christine Gregoire, Governor, State of Washington, BA '71

Phyllis Gutierrez Kenney, State Representative, 46th District

John Hoerster, Chair/Managing Director, Garvey, Schubert & Barer, JD '69

Wendy Holden, Washington State Department of Health (retired), MPA '76, BA/BS '73

Kate Janeway, Business Growth Consulting, LLC, MPA '90

John R. Kephart, Washington First International Bank, BA '76

Jim Lane, Consultant, Osgood O'Donnell & Walsh, BA '56

Gary Locke, Partner, Davis Wright Tremaine LLP

Patricia McKay, Executive Director, Medina Foundation, BA '86

Neil McReynolds, Strategic Director, Buerk Dale Victor LLC, BA '56

Gregory J. Nickels, Mayor, City of Seattle

David M. Olsen, Senior Vice President, Starbucks Coffee Company

Harry Pryde, Pryde Corporation, MPA '57

Ann Pryde, Pryde Corporation, BA '56

Norman Rice, Distinguished Practitioner-in-Residence, Evans School of Public Affairs, MPA '74, BA/BS '72

Charles T. Royer, President, Institute for Community Change, BA '66

Ron Sims, King County Executive

Robert Watt, Vice President, Government & Community Relations, Commercial Airplanes, The Boeing Company (retired)

Bruce Williams, Chief Executive Officer, HomeStreet Bank, JD '82

Colleen Willoughby, President, Washington Women's Foundation

Cynthia Zehnder, Chief of Staff, Washington State Governor's Office, MEd '74, BA '72

2005-06 Donors continued

Janet S. and Richard W. Scholtes
Frank I. Schott
William M. and Kathleen Schrier
Rosemary Schwartz
Harold P. Scogin and Patricia Gilmore
Carl A. See
Catherine N. Sheehy
Joel M. Sherman
Peggy Shull
Patricia A. Simon
Amy Skei & Robert Preston
Anne E. Smith
Colin E. Smith
Gretchen Snoey
Muriel G. Softli

Rachel H. and Ron Solemsaas
Arnold M. Sowell
Peter Spinney and Allison Cook
Edward and Dorothy Stimpson
Catherine G. Stineback
Jeff and Jeannie Straussman
Joseph C. Sullivan and Desiree A. Loughlin
Catherine M. Suter
Debra K. Taevs
Mitsuru Tamura
Bruce M. and Carolyn Tanner
Michael J. and Winifred Tate
Charles A. and Diane D. Taylor
Paul W. and Elaine V. Taylor
Grant R. Telfer
Erica A. and Eric M. Thorson
Caroline A. Tillier

Daniel J. Torres
Betsy A. Troutman
Jessica C. Trupin
Wayne L. and Patricia P. Turnbull
William T. Turnbull
Kathleen M. and David A. Uhlorn
Calvin M. and Ann Uomoto
Allan Vajra
Jeremy J. and Sarah M. Valenta
Laurie Vander Velde and Michael Velde
Gerard Vanderwood
Kasandra S. Verbrugghen
Merrily R. Vincent
William A. Walk
Leslie H. and Timothy C. Wallstrom
Gigi Wang and Raymond McGovern

Heather A. Watson-Ayala
Laura L. Weese
Lisa E. Weinberg
Luke R. and Janet Weisberg
Jennifer C. Weitzman
Lynn W. Whipple
Richard C. and Janet Wilkie
Robert W. and Carol Wilkinson
Brett M. and Laura Wilson
Lisa A. and Matthew G. Woicik
Megan L. Wolfe
Barbara A. Wright and Dwight W. Gee
Yolanda Wu and Neil Platt
Owen H. Yamasaki
Nicholas A. Zajchowski
Katell Zappa
Daunne P. Zinger

Donor Focus:

NORA GRIP BORETTI

A sociology major in her undergraduate studies, Nora Grip Boretti (MPA, '05) studied the poverty and inequality she observed growing up in the Chicago area. After three years in New York City working for an economic development grant-making program, Boretti moved to Seattle. She decided to pursue her MPA because it coupled social issues with management skills. As the recipient of a fellowship from the Daniel J. Evans Endowment for Excellence in Public Service, Boretti was able to focus on her studies rather than on student loans. "Receiving a fellowship builds confidence. It motivated me to excel."

Boretti's Evans School internship with the U.S. Government Accountability Office (GAO) turned into a job after graduation. As a member of the education, workforce, and income security team, Boretti works on issues related to disabled veterans. She says, "The Evans School provides a collegial, collaborative environment, where faculty are committed to students, and people are willing to work together." As an alumna, Nora continues to be involved with the Evans School, connecting with students through Career Services and as a donor.



"I WANT OUR ALUMS
TO GO ON AND DO
GREAT THINGS AND
FOR THE EVANS
SCHOOL'S NATIONAL
REPUTATION TO GROW
AS A RESULT."

BE PART OF THE EVANS SCHOOL'S FUTURE

Please consider a gift now...

The Evans School relies on generous financial support to ensure our vision is realized. To donate to the Evans School and/or request information on deferred giving options, such as charitable bequest or life income plans, please contact:

Evans School of Public Affairs	Phone: 206.616.9683
Development & Alumni Relations	Fax: 206.685.9044
University of Washington	Email: evansgive@u.washington.edu
208 Parrington Hall, Box 353055	website: http://evans.washington.edu
Seattle, WA 98195-3055	

Evans School Administration

Sandra O. Archibald, *Dean and Professor*
Richard O. Zerbe, *Associate Dean for Academic Affairs*
Ann Bostrom, *Associate Dean for Research*
Linda Lake, *Assistant Dean for Finance and Operations*
Jason Smith, *Assistant Dean for Student Affairs*
Ann Marie Borys, *Assistant Dean for Academic Affairs*

Evans School Development Office

John Siegel, *Director of Development*
Lynn Wetzler, *Assistant Director of Development and Alumni Relations*
Sarah Weber, *Development Specialist*

“ALL THAT WE CAN BECOME AS
A SOCIETY DEPENDS CRITICALLY
ON THE EVANS SCHOOL’S ABIL-
ITY TO DEVELOP LEADERS FOR
A BETTER TOMORROW. THAT
FUTURE IS POSSIBLE ONLY IF
WE INVEST TODAY IN A STRONG
STUDENT BODY AND FACULTY.”

DANIEL J. EVANS
Former Governor of the State of
Washington and U.S. Senator

Photography: Anil Kapahi and Karen Orders

Evans
School
of Public Affairs

UNIVERSITY OF
WASHINGTON

208 Parrington Hall
Box 353055
Seattle, WA 98195-3055

<http://evans.washington.edu>

Nonprofit Organization
U.S. Postage
PAID
Seattle, WA
Permit No. 62